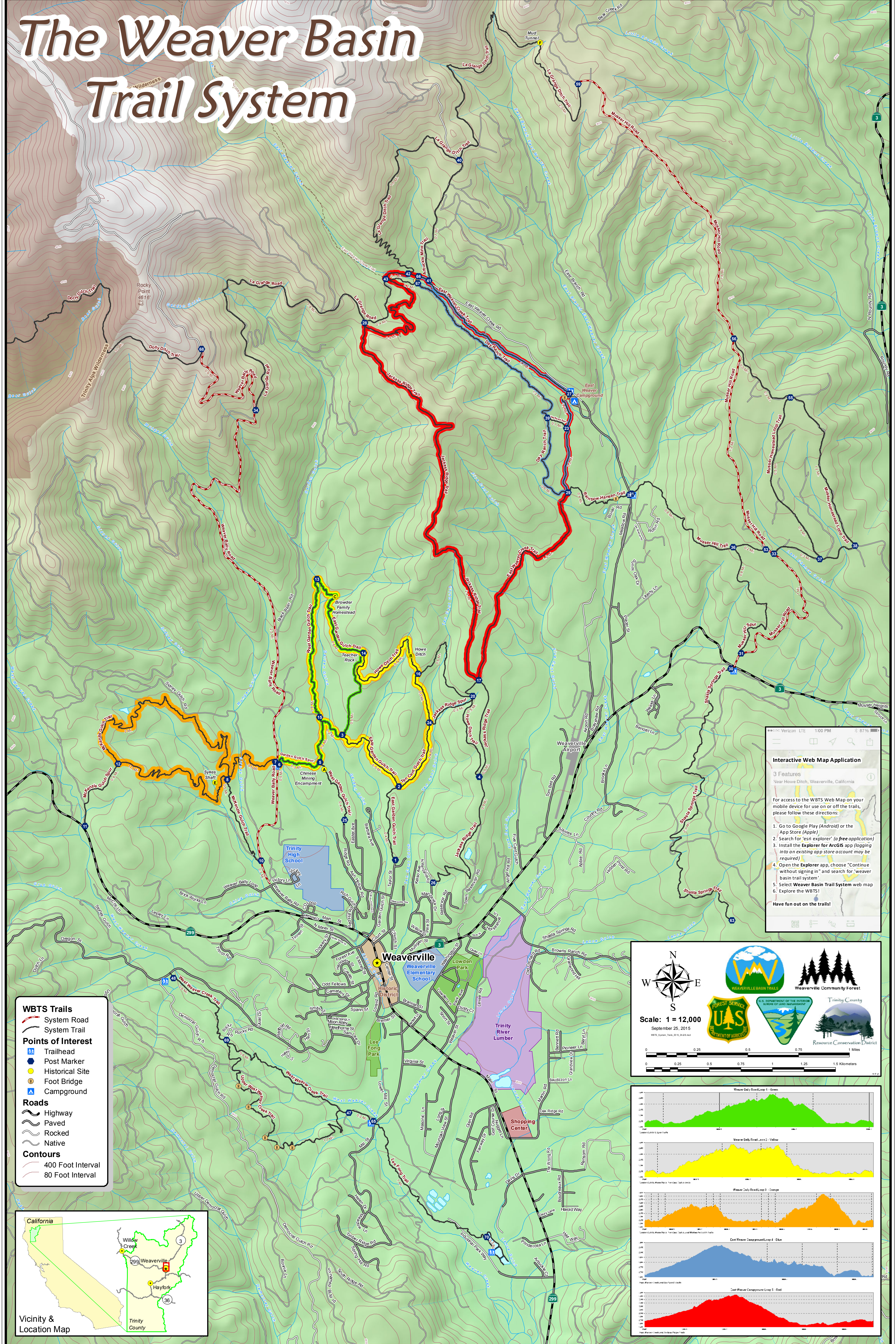


The Weaver Basin Trail System



WBTS Trails

- System Road
- System Trail

Points of Interest

- Trailhead
- Post Marker
- Historical Site
- Foot Bridge
- Campground

Roads

- Highway
- Paved
- Rocked
- Native

Contours

- 400 Foot Interval
- 80 Foot Interval

Interactive Web Map Application

3 Features
Near Howe Ditch, Weaverville, California

For access to the WBTS Web Map on your mobile device for use on or off the trails, please follow these directions:

1. Go to Google Play (Android) or the App Store (Apple)
2. Search for 'esri explorer' (a free application)
3. Install the Explorer for ArcGIS app (logging into an existing app store account may be required)
4. Open the Explorer app, choose "Continue without signing in" and search for "weaver basin trail system"
5. Select Weaver Basin Trail System web map
6. Explore the WBTS!

Have fun out on the trails!

Scale: 1 = 12,000
September 25, 2015
WBTS System, Trail, 2015, 10:00 AM

0 0.25 0.5 0.75 1 1.25 1.5 Miles
0 0.25 0.5 0.75 1 1.25 1.5 Kilometers

